

Res # 840
Strong ST.

Ex. 4" vit.
san.

Ex. 10" clay Field tile
w/ 6" PVC inside and
cemented joint

4" vit. F.L.
Elev. 669.50

6" PVC SEE
F.L. Elev. 669.00

6" PVC storm
outlets into
storm manhole

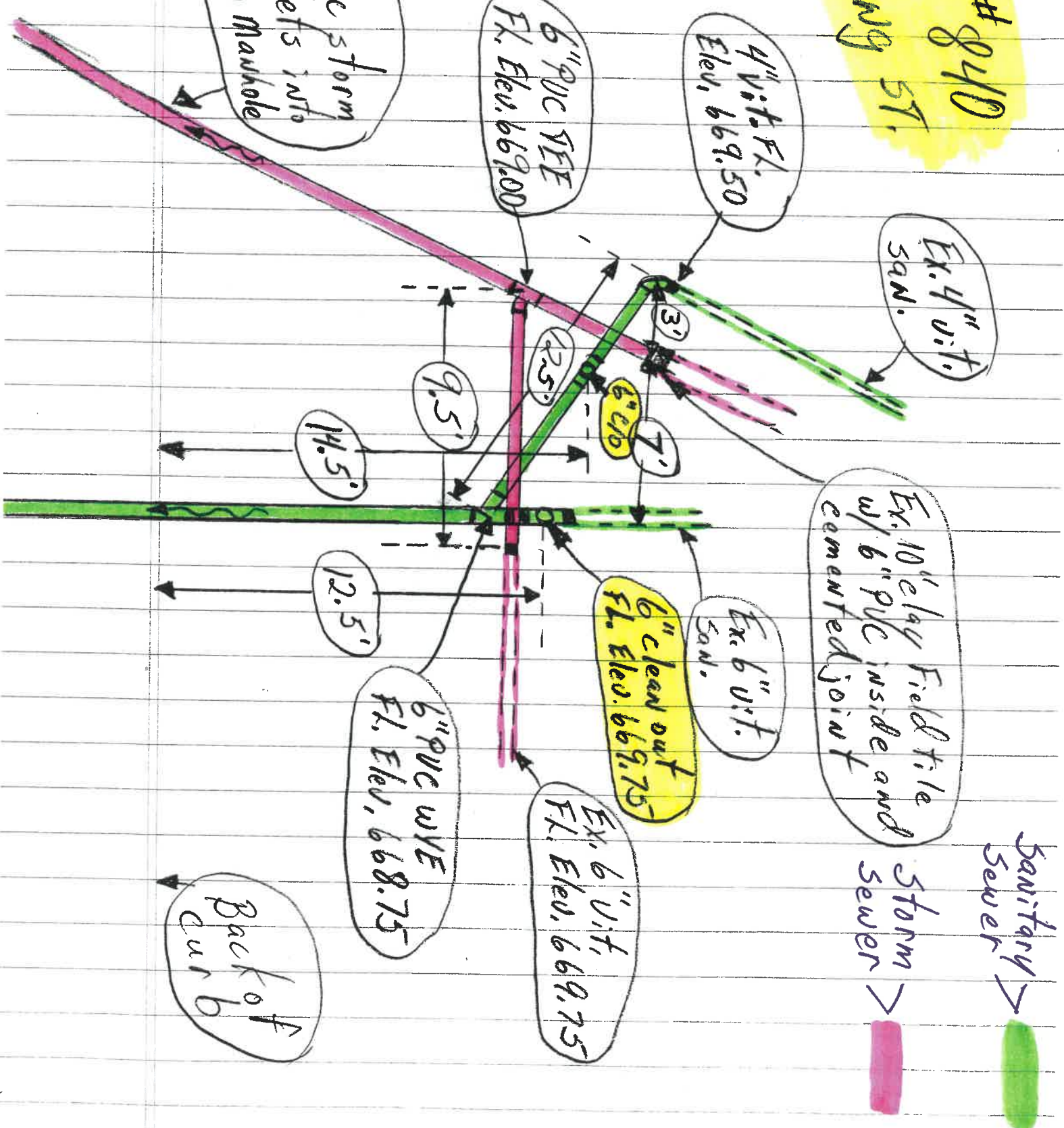
Ex. 6" vit.
san.

6" clean out
F.L. Elev. 669.75

6" PVC WYE
F.L. Elev. 668.75

Ex. 6" vit.
F.L. Elev. 669.75

Back of
curb



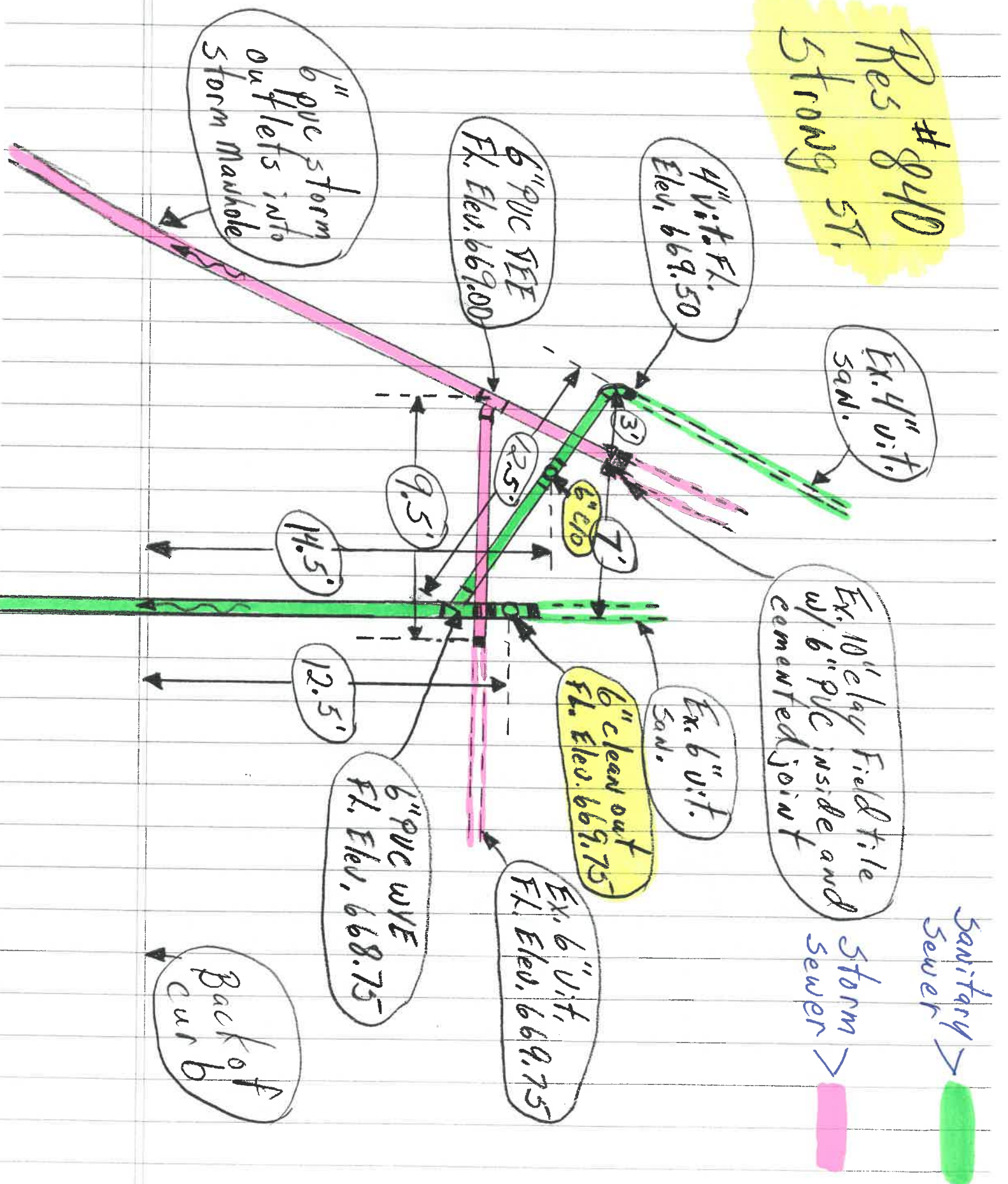
Res # 8410
Strong ST.

Ex. 4" v.i.t. san.

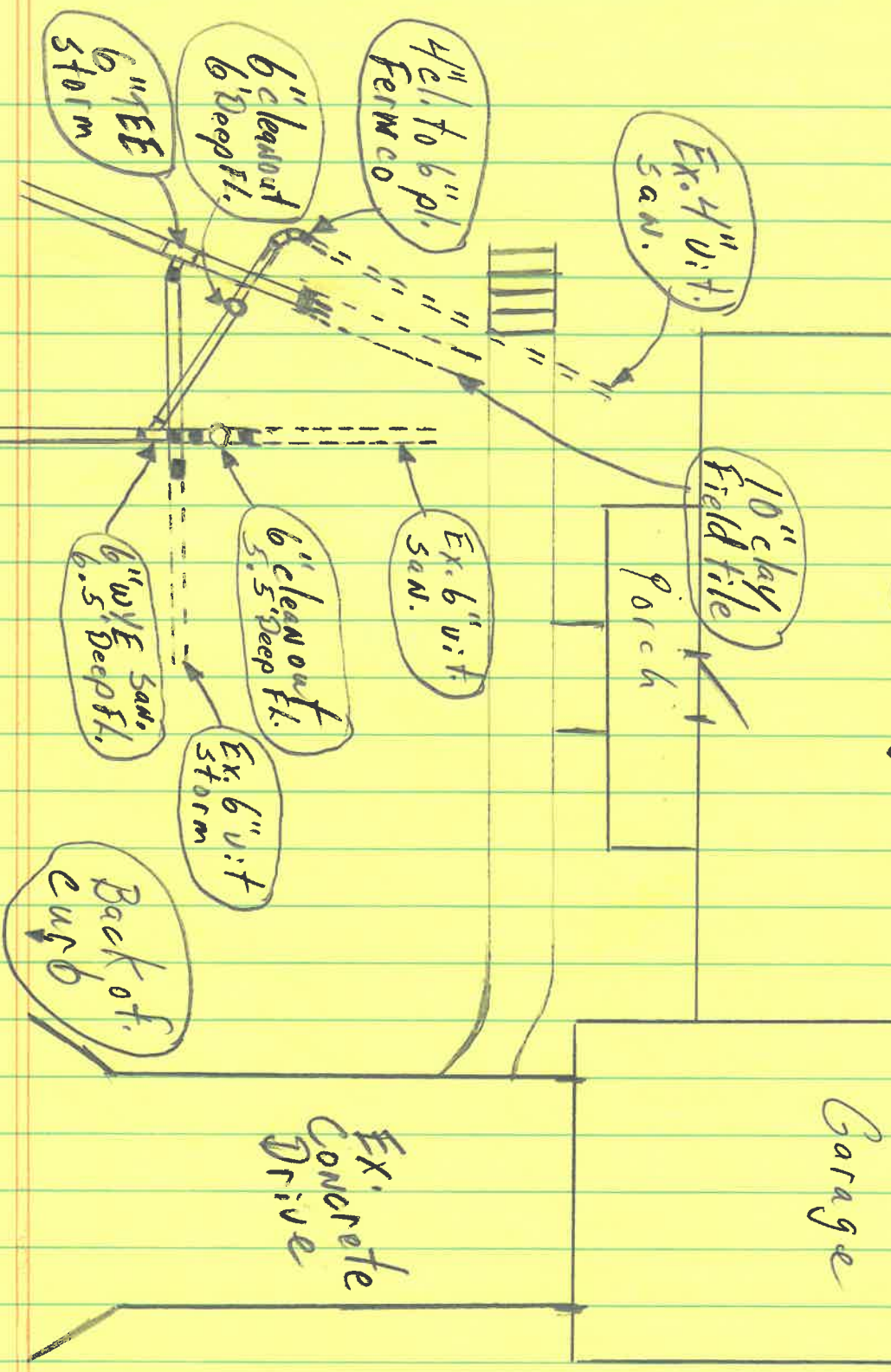
Ex. 10" clay Field tile w/ 6" PVC inside and cemented joint

Sanitary Sewer

Storm Sewer



Res #840
Strong St.



Res #840
Strong ST.

